



*"A home built with quality,
craftsmanship and pride"*



Live on Barker's Island, Superior WI

For Sale: \$1,198,000



The Great Room



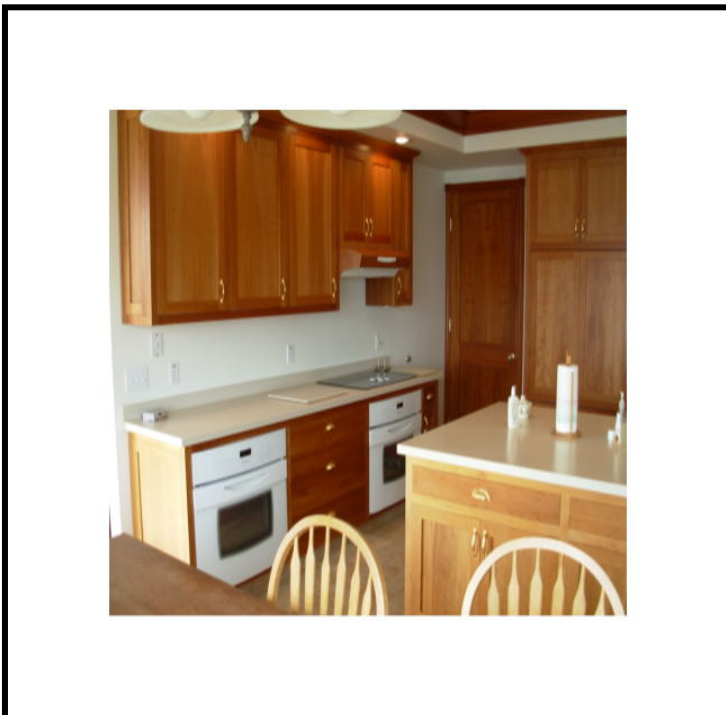
The focal point of the home is the magnificent seven foot wood burning, stone fireplace, stretching 22' to the cathedral ceiling .

The Great Room is 20'1" x 17'7". A powder room is nicely placed behind the fireplace for privacy.



- Beamed T-N-G Pine ceiling and
- White Oak floors, crown molding
- 8'Atrium doors leading to wrap around deck
- Multi zoned In-floor heat
- Kolbe/Kolbe energy efficient windows

The Kitchen



- 22'3' x 16'10
- Recessed lighting
- Custom wood shades
- Twin JenAir Ovens
- Wood paneled Refrigerator
- Corian counters
- Bosch dishwasher
- Smooth surface cook top
- Ceramic tile floor
- American Cherry cabinets
- Pocket Doors leading to office

The Library



- The Library measures 14'1" x 13' 4" with floor to ceiling bookcases along one wall.
- Wood paneling, crown molding and recessed lighting.
- Beveled French doors open into this room from the main entry.
- Hidden passage to the 9'11 x 10'7" office behind the sliding book case.

The Master Suite



- 17'4" x 13'6" with a unique, custom built wood paneled wall over-looking the Harbor
- Walk-in closet 18'8" x 7'1"
- Soaking tub and separate shower
- Counter-height vanity, Corian top
- Linen Closet

Pool and Laundry Rooms

- 25'2" x 15'9" with separate air exchanger, ceramic tile surround, wall mural and vacuum system



- Laundry Room 12'6 x 8'5" with 'Dog Wash' and exit door to Deck with invisible fence.

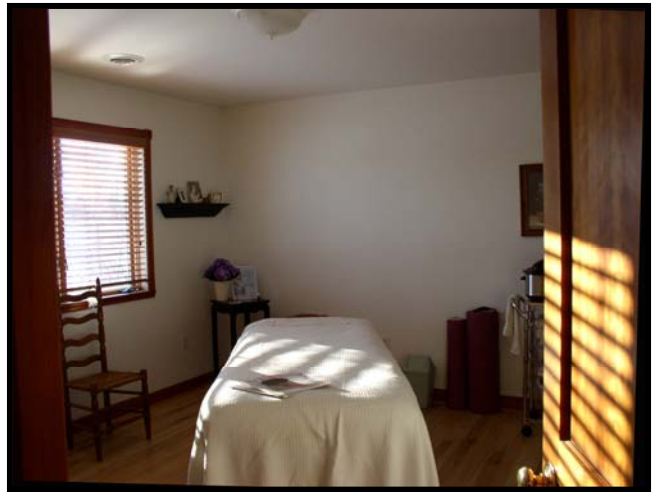


2nd Floor Bedrooms

- 2 bedrooms:
13'6" x 12'2"

Each bedroom has
a large closet,
hickory floors
and are joined
by a full bath

and 13'1" x 11'11"



The Loft



- The upper loft has 8' ceilings and a wall of large, energy efficient windows overlooking the Harbor and Park Point

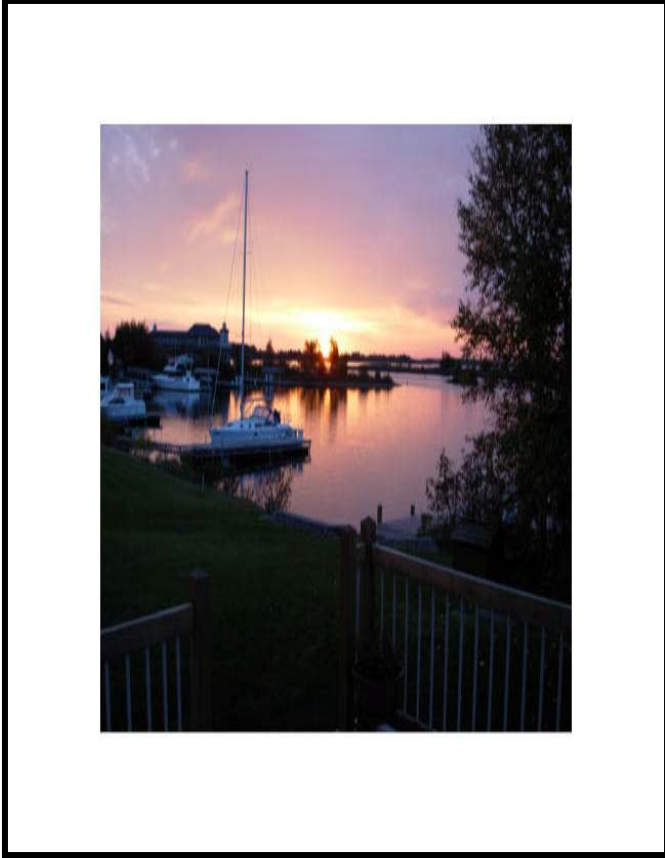


Guest Suite

- This 2nd floor 30'9" x 17' suite with private full bath, has many possibilities from a 2nd master suite to a media room(220 Amp electric).



Views







Additional Features:

- The deep water dock is large enough to accommodate any size boat or float plane.
- For additional entertainment a swing has been attached to the end of the dock to cool off on those warm summer days.
- There has been an automatic irrigation system installed for healthy plants and trees.
- The footprint of land belongs to the owner, the yard is part of the association. Fees are extremely reasonable and cover law mowing and snow removal.
- The home construction was completed in 2002.
- The garage can hold up to 3 smaller-medium sized cars.
- Taxes for 2008 were \$12,034.



Beth Wentzlaff
Broker/President
Lic. MN & WI

Kathy Hayes
REALTOR

Gayle Ankarlo
REALTOR



Let CMRA, LLC make your dream
of owning this home a reality.

www.cmrasells.com

(218) 727-0064

“Professional service with personal representation.”