

For Sale: 430 N. 22nd Ave. W.

Sale Price: \$98,900

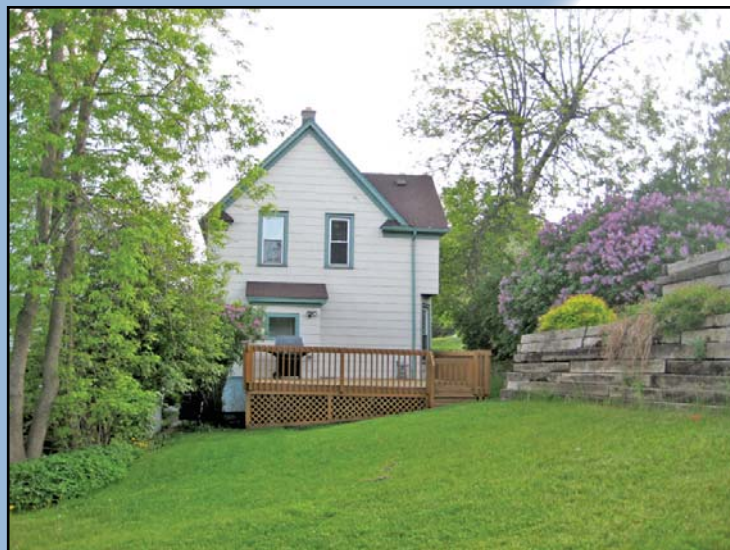


Home features:

- Sun-filled living room
- Formal dining room with new flooring
- Updated, eat-in kitchen
- Two large bedrooms with walk-in closets
- Huge updated bath
- Front porch with swing
- Deck over-looking the backyard
- Off-street parking with garage possibilities

This home is very spacious and has lots of updates to boast! Enjoy quiet evenings on the front porch swing. Savor the park-like setting of the backyard from the large deck. Move right in to this clean and updated home. The main floor is open with living room, formal dining and eat-in kitchen with new cabinets and flooring. Upstairs you will find two spacious bedrooms with walk-in closets and the bathroom with a large linen closet and enough room to add a jacuzzi tub!

Call our office for information on how you can take advantage of the \$8000 First Time Home Buyer Tax Credit!



1405 Miller Trunk Highway, Suite 600 Duluth, Minnesota 55811

(218) 727-0064

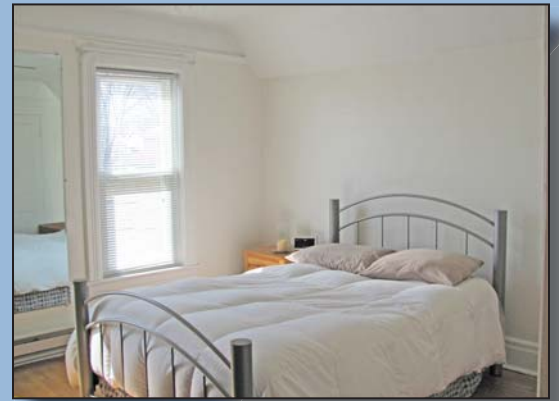
www.cmrasells.com





Room Dimensions:

Living Room	12 x 12'9
Dining Room	12' x 12'3
Kitchen	9'6 x 12'7
Bedroom 1	12 x 13
Bedroom 2	12 x 12' 7
Bathroom	9'7 x 8'8



Lot Size: 35 X 100

Taxes: \$632.54

Tax Year: 2010

Assessments: \$18.00

MN Power: \$75/mo.

Comfort Systems: \$120/mo.



www.cmrasells.com