

CALLING ALL DEVELOPERS...

1810 MIDDLE ROAD



ASKING PRICE: \$160,000

EXCITING OPPORTUNITY!

This is not your typical land sale, nor is it a typical development project. Already available for the potential Buyer are preliminary designs for an 18 unit assisted living facility developed to ensure the existing character and neighborly atmosphere of this community is preserved. Along with this is free water and sewer hook-ups, a completed wetland mitigation, planning and zoning approvals given (if nothing exterior is changed) and various tests and borings taken.

- TOTAL LOT SIZE: 1.03 ACRES
- WOODED AND ROLLING LOT
- ZONED R3
- MINUTES FROM KENWOOD SHOPPING CENTER
- DSGW ARCHITECTS AND SALO ENGINEERING SITE PLANS
- UTILITIES ON SITE
- 4,200 SQ FT BUILDING
- 2011 TAXES: \$1,092.13



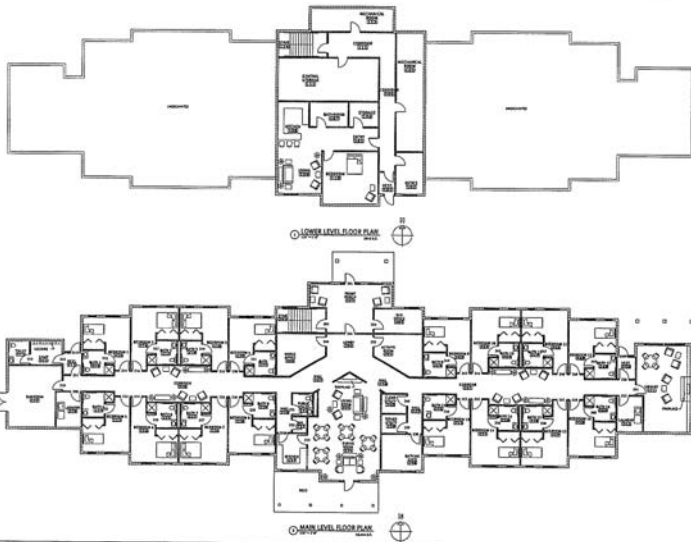
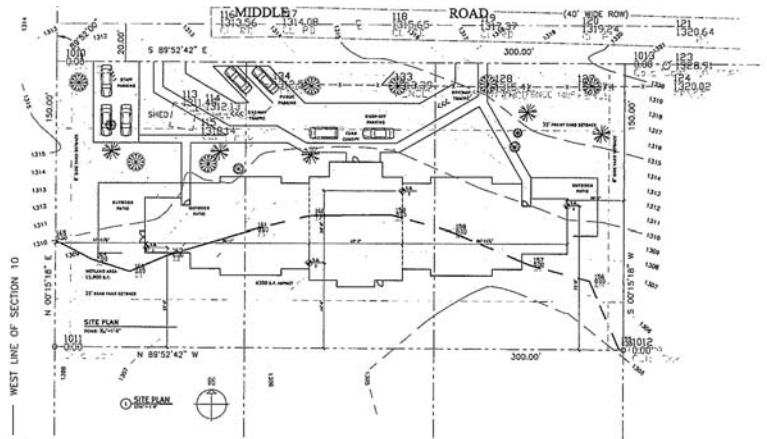
218-727-0064



CMRA, LLC • 1405 MILLER TRUNK HWY, SUITE 600 • DULUTH, MN 55811
(218) 727-0064 • FAX: (218) 727-0054 • WWW.CMRASELLS.COM



Plans and design by:



Architctural Design for
1810 Middle Rd.
These plans are included in
the sale price.



www.cmrasells.com