

1405 Miller Trunk Highway • Suite 600
Duluth • Minnesota 55811
(218) 727-0064
www.cmrasells.com



1112 Tower Avenue



For Sale
or For Lease



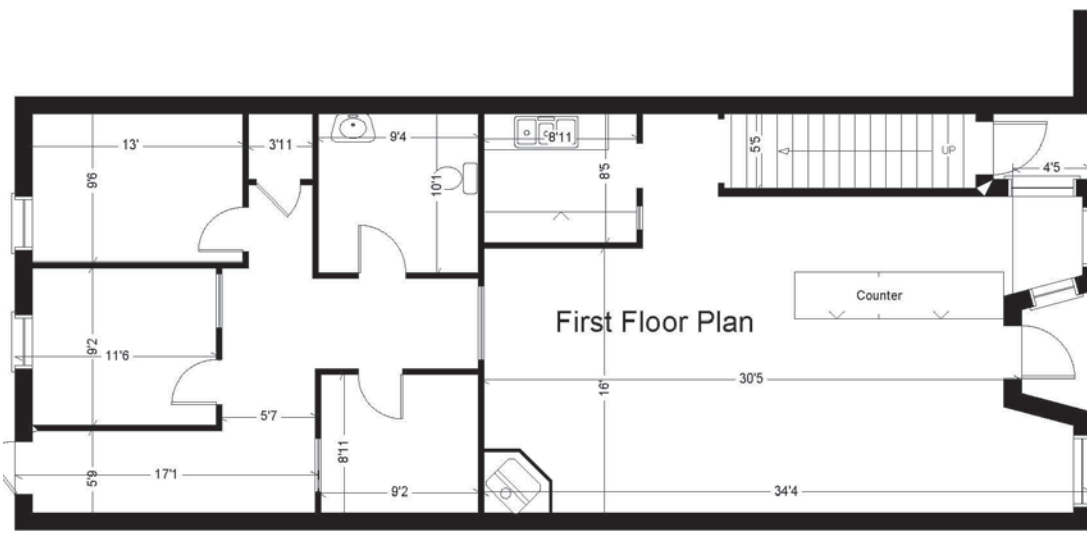
Located between bankers, attorneys, title company, printers and eating establishments this distinctive building combines excellent visibility, accessibility and affordability to make it one of the prime locations for your new or expanding business in Superior!

The main level is excellent for retail. Large windows, a corner fireplace, terrazzo floors, grand ceilings, three private offices, commercial sink and large rest room are all available within the 1,500 square foot suite.

The upper level is beautifully finished with six private offices, a shower and sink in one room and rest room in another room. This area has a separate entrance, original exposed sandblasted brick wall, oak stairs with a large borrow light window. Perfect for a professional company needing a 1,500 square foot office suite.

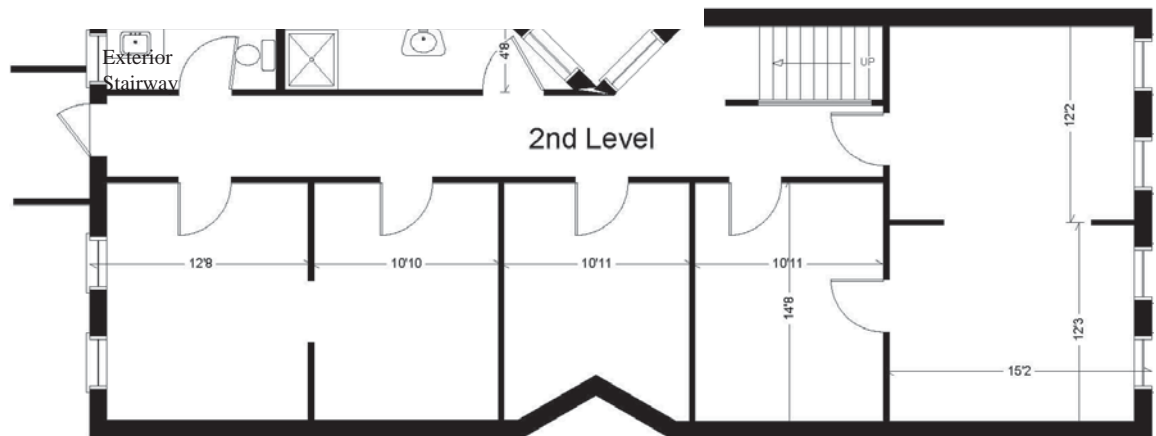


Asking Price \$198,000



Floor Plans

Full Basement not shown



All dimensions should be verified.

1112 Tower Avenue offers turn of the century charm in a fully renovated building. The owners took great care in restoring the character and the quality of yesterday's workmanship with the energy efficiency of today. The heating has been installed with a four-zoned natural gas system. The plumbing and electrical have been updated and the first floor even offers 220v in the small kitchen area. There is a full basement for storage, plus a private parking area behind the building with access to both floors.

The interior of the exterior walls have been striped to the original brick and sandblasted adding to the appeal. There is an added bonus for the retailer, various sections of slat walls for easy display are already in place. If you are looking for an investment property, or if you are ready to move your business or office to Superior's busy Tower Avenue, this is an excellent opportunity. Call for lease rates.



Professional representation with personal service!



Beth Wentzlaff
Broker/President
Licensed In WI & MN



Kathy Hayes
REALTOR



Gayle Ankarlo
REALTOR

Call (218) 727-0064 or visit www.cmrasells.com